



R4 Series General Duty Quarter-turn Electric Valve Actuators



The **Assured Automation R4 Series electric actuators** offer a simple and cost-effective solution for automated actuation of quarter-turn (90°) ball, and butterfly valves with torque requirements up to 600 in/lbs. These general duty actuators have a 1/2" NPT conduit entry for wires. The reversing motor with end of travel limit switches is enclosed in a polycarbonate housing with a diecast zinc alloy base providing a NEMA 4/4X weatherproof rating.

SPECIFICATIONS

Materials:**Cover:** Polycarbonate**External Shaft:** Zinc Plated Steel**Gears:** Hardened Steel**Indicator:** Stamped painted steel arrow**Direct Mounting to Valve:****ISO 5211:** F03 / F05 / F07**Drive Shaft:** 14mm female star**Electrical Connection:**

1/2" NPT conduit entry to internal screw terminal strip

Temperature Range:

0°F to 150°F

down to -40°F with optional heater

Enclosure Rating:

NEMA 4/4X weatherproof

Motor:

Single phase reversing motor with end of travel limit switches

Duty Cycle:**AC:** 25%**DC:** 100%**Thermostat Controlled Heater:**

(optional) 3.5 W

FEATURES

- ISO 5211 mounting pad (F03 / F05 / F07) for direct mount to valve
- NEMA-4, 4X housing design for superior corrosion resistance
- Factory sealed gearbox
- Visual position indicator clearly illustrates valve position
- Decluthable Manual override - zinc plated steel stem with wrench flats for easy manual operation - push down to disengage
- Fine adjust cams allowing 90° to 270° operation
- 1/2" NPT conduit entry for wires
- Thermally protected motor to prevent overheating
- Hardened steel gearing
- 5 A SPDT switches that stop the motor and divert power to external lines for indication or other function
- Self-lubricating shaft bearings

OPTIONAL FEATURES

*Many of these are **special order** with **extended lead times***

- 2 extra SPDT switches (isolated) with independent adjustable cams
- Heater and thermostat to prevent condensation build-up and corrosion
Call for details

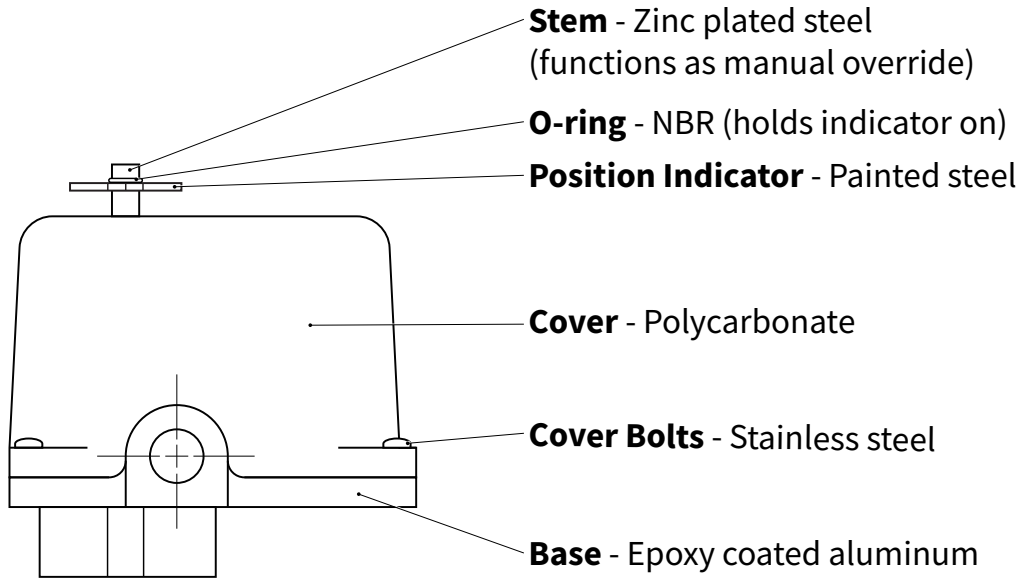


R4 Series



General Duty Quarter-turn Electric Valve Actuators

CONSTRUCTION

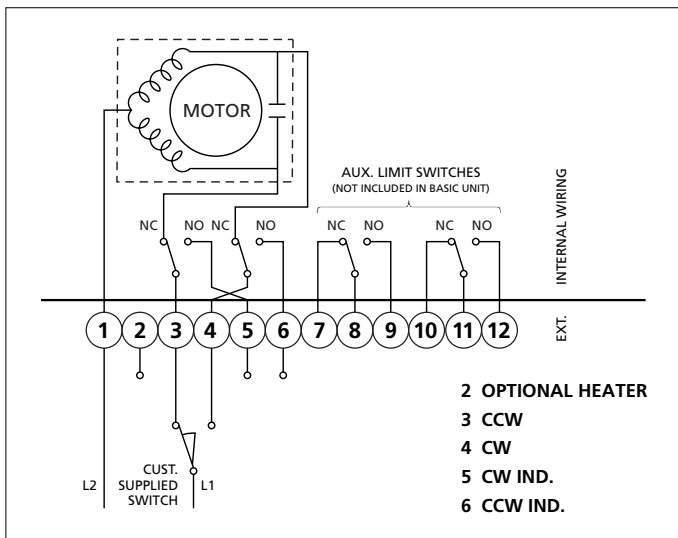


WEIGHT, SPEED, & CURRENT DRAW

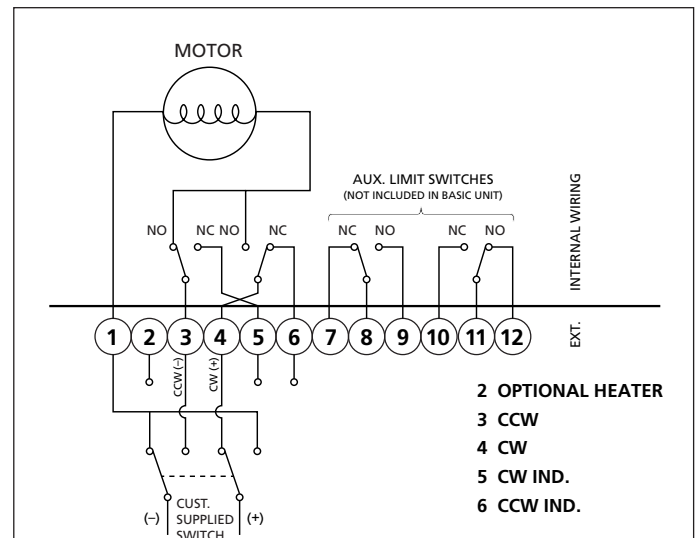
TORQUE MODELS	Speed (seconds)	Current Draw (Amps)					Weight (lbs.)
		24 VAC	120 VAC	230 VAC	12 VDC	24 VDC	
300 in/lbs	9	2.8	0.87	0.48	2.0	1.0	6.0
600 in/lbs	16	2.8	0.87	0.48	2.0	1.9	6.0

WIRING DIAGRAMS

TYPICAL AC WIRING SCHEMATIC



TYPICAL DC WIRING SCHEMATIC



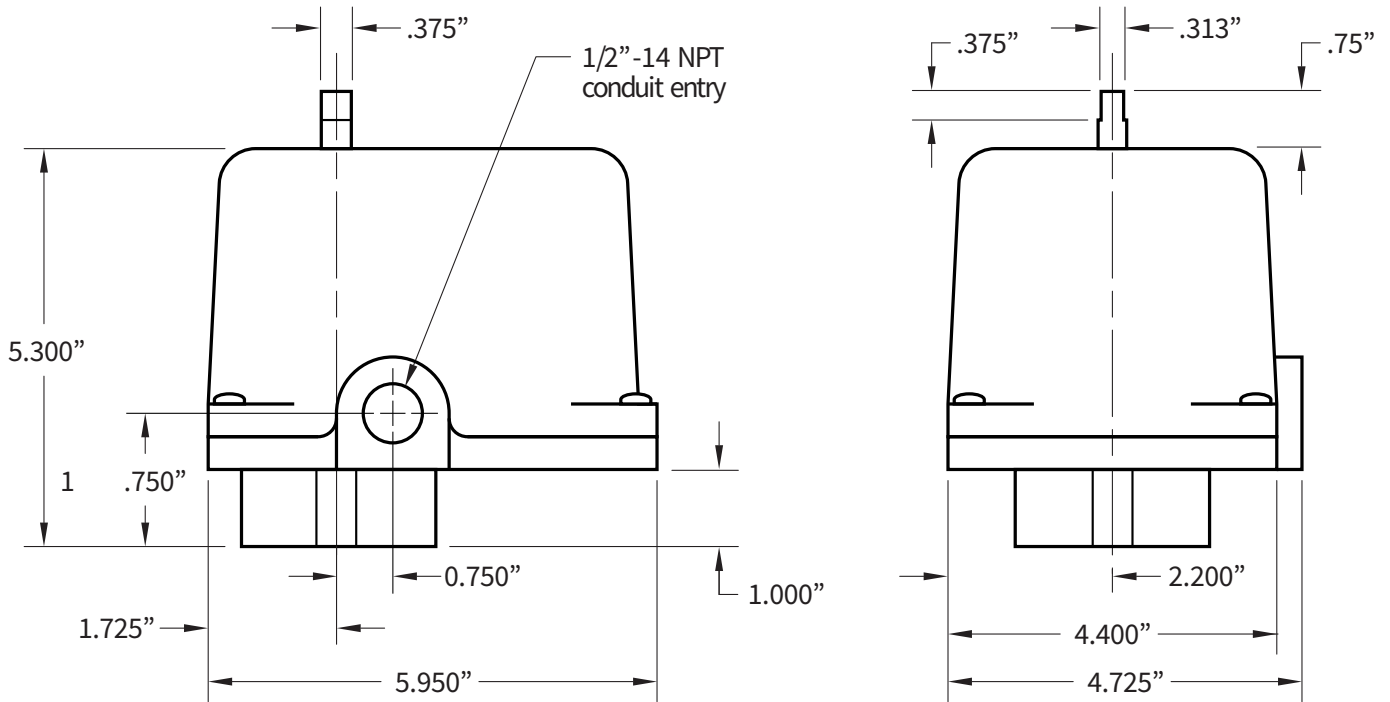


R4 Series

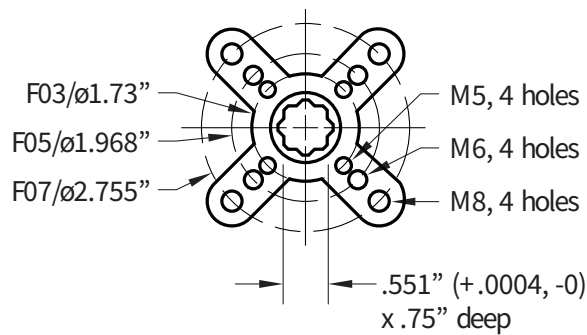


General Duty Quarter-turn Electric Valve Actuators

DIMENSIONS



ISO 5211 Mounting





R4 Series



General Duty Quarter-turn Electric Valve Actuators

ORDERING INFORMATION

R	300	A	E
Series	Torque	Voltage	Options

Output Torque:

- 300 = 300 in/lbs.
- 600 = 600 in/lbs.

Supply Voltage:

- E = 24 VAC
- A = 120 VAC
- C = 230 VAC
- F = 12 VDC
- B = 24 VDC

Options and Accessories:

**For all other options - please call 1-800-899-0553 to speak with a valve automation expert*

- E = 2 extra isolated SPDT switches with adjustable cams.
- H = Heater

If the R4 Series Electric Actuator does not fit your application, please consider another series in our comprehensive offering.

CE Series



V4 Series



S4 Series



K4 Series



B7 Series



Make it Easy!
Compare All Electric Actuators Now